



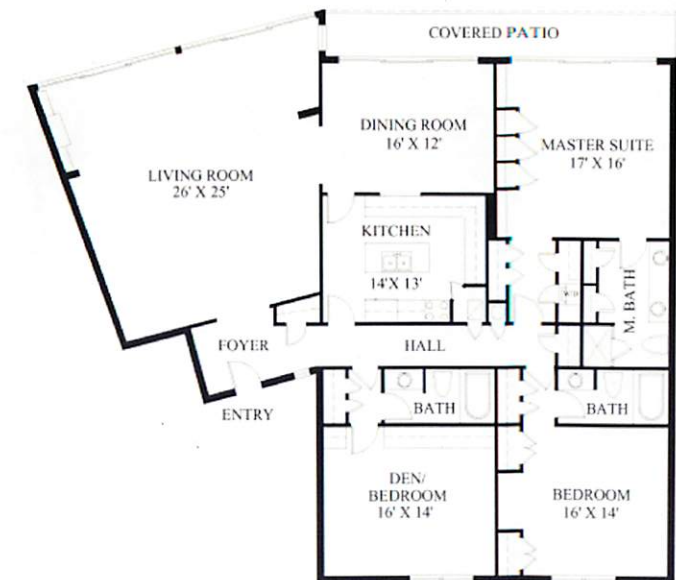
**Lost Tree Village
Greathouse D-104 • North Palm Beach • Florida**



ENGEL & VÖLKERS®

11042 TURTLE BEACH ROAD
GREATHOUSE D-104


ENGEL & VÖLKERS



TOTAL AREA - 2,230 S.F.



Lost Tree Village

Price Upon Request
ID-No. E-0001LZ

Spectacular 3 bedroom, 3 bath condominium with privacy garden and oceanfront access. Completely renovated with all new bamboo wood floors in Chestnut color throughout the main rooms. New kitchen cabinets with top of line LG stainless appliances. Bathrooms feature all new Kohler commodes, sinks and Grohe faucets. Natural stained Pecky cypress

ceiling and Sun shield screening in the Florida room. New larger American Standard air conditioner with compressor, new Rheem hot water heater, new Bosch stackable washer/dryer. Spacious and bright floorplan with access by underground parking. Walking distance to the Beach Club. Elevator building.

Contact:

David Reback • 561.313.7762
David.Reback@engelvoelkers.com
Cam Kirkwood • 561.714.6589
Cam.Kirkwood@engelvoelkers.com
John Reback • 561.313.7763
John.Reback@engelvoelkers.com
Sheri Reback • 561.685.9215
Sheri.Reback@engelvoelkers.com

North Palm Beach
11456 U.S Highway 1
North Palm Beach, FL 33408 · USA
Telephone +1-561-627-0066
Facsimile +1-561-627-7848
northpalmbeach@engelvoelkers.com
www.engelvoelkers.com/northpalmbeach

Palm Beach
235 Peruvian Avenue · Suite 1
Palm Beach · FL 33480 · USA
Telephone +1-561-653-9996
Facsimile +1-561-653-6299
palmbeach@engelvoelkers.com
www.engelvoelkers.com/palmbeach

Manalapan
277A S. Ocean Blvd.
Manalapan, FL 33462 · USA
Telephone +1-561-588-1510
Facsimile +1-561-588-1511
manalapan@engelvoelkers.com
www.engelvoelkers.com/manalapan



ENGEL & VÖLKERS